

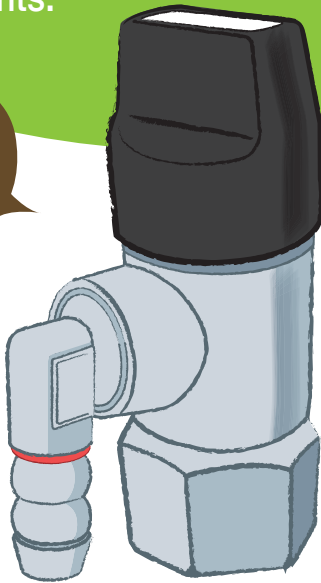
Did you know that your gas supply valve has the product life?

If you don't replace it by the due date, you have a higher risk of a failure. Be sure to replace the valve by the due date to prevent accidents.

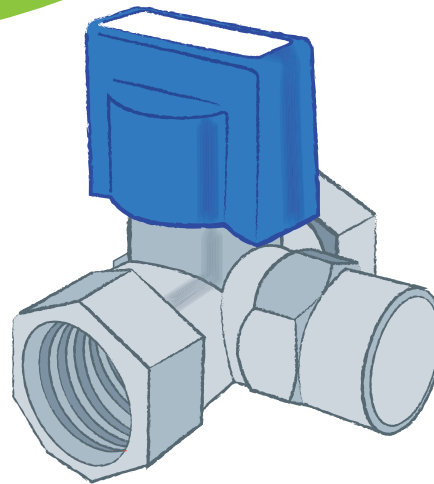
This label
shows
the replacement
date.



Gas valve
for rubber
hose



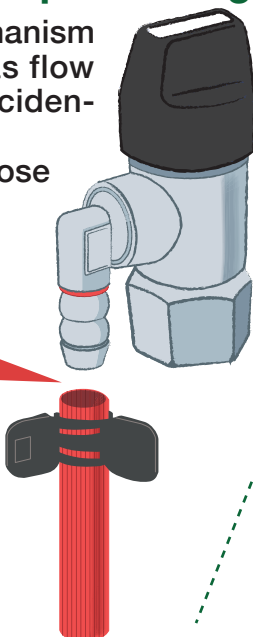
Gas valve
for flexible
tube



Gas valve safety features

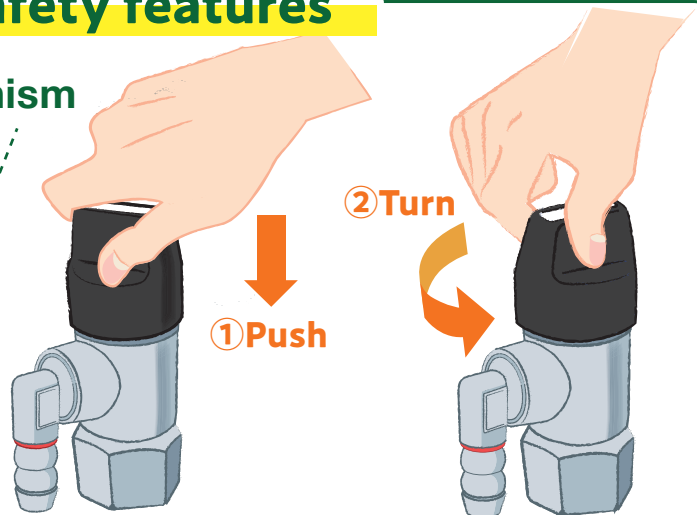
◎Excess flow preventing mechanism

The safety mechanism shuts off the gas flow if the hose is accidentally pulled out.
(Note: Rubber hose valves only)



◎Push-twist safety mechanism

The safety mechanism prevents the valve from being opened accidentally. To open the valve, push and hold the knob then rotate.
(Note: For both rubber hose and flexible gas tube connections)



A faulty gas valve can cause a leak, as shown in the following figure. If your gas valve looks like any of the cases below, it should be replaced immediately.

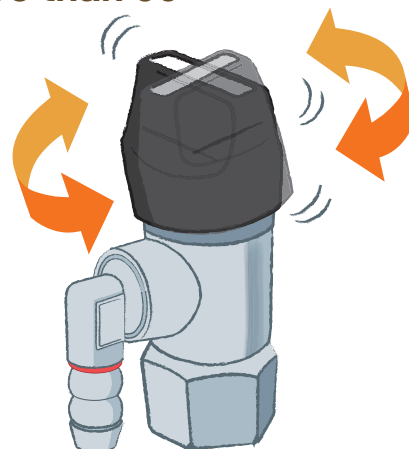
Note : Valve replacement requires a qualified electrical worker. Contact your local LP gas dealer for assistance.

CASE 1 Knob is stiff/won't rotate



Never use excessive force as this could damage the valve and cause a leak.

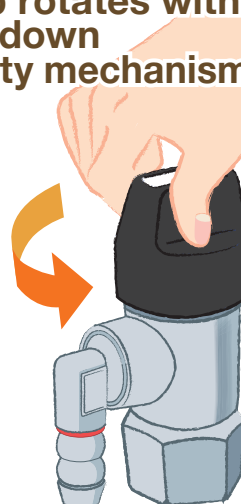
CASE 2 Knob is loose/rotates more than 90°



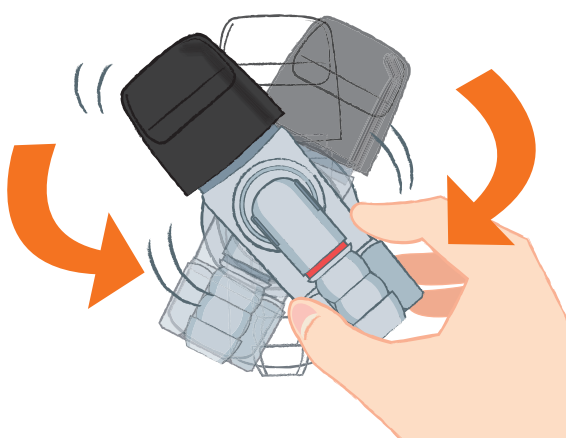
CASE 3 Valve is damaged



CASE 4 Knob rotates without being held down (safety mechanism is damaged)



CASE 5 Valve fitting is not secure



CASE 6 Fitting of parts connecting rubber hose is unstable

